



WIFI

Intelligent Solar Energy Alert PTZ Camera User Manual



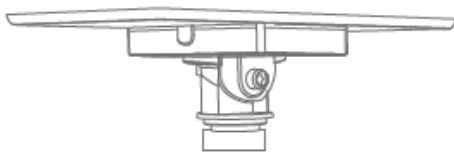


1. Product and Packing List

1.1 Product Picture:



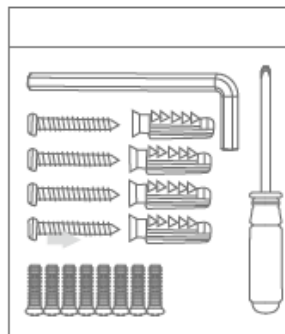
1.2 Packing list:



1* Solar panel



1* PTZ Camera



- 1*Screw kit
- 1*Hexagon spanner
- 1*Screw driver
- 8*Screws
- 4*Tapping screw
- 1* USB charging cable



1*User manual

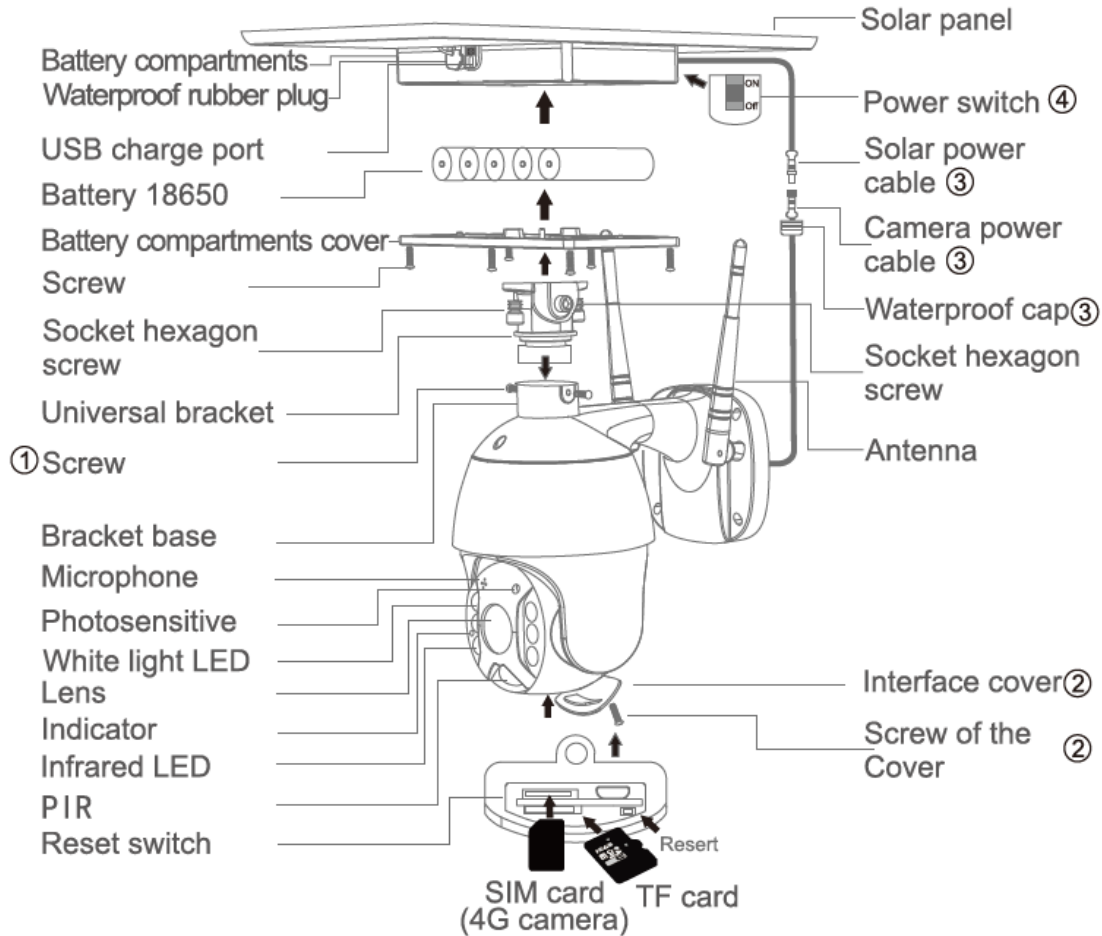


1*Position paper



1*Qualification

Product Diagram



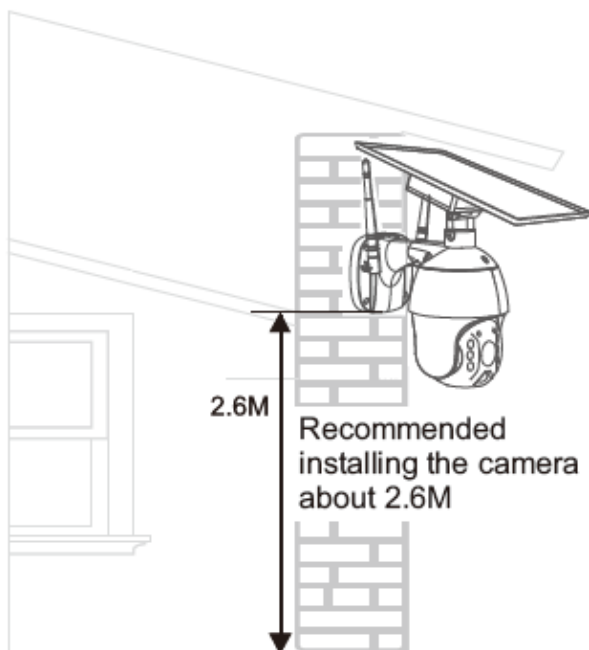
1.3 Process

- 1.3.1 Solar panel: connect panel to camera, fix a suitable angle with screws
- 1.3.2 Sim card (For IPCAMPTZSOLAR4G) and TF card: loosening the cap in the above remark
- 1.3.3 Insert sim card (For IPCAMPTZSOLAR4G) and TF card, then tighten the screws.
- 1.3.4 Power Cable: Connect the cables between the panel and camera, then tighten the waterproof cap.
- 1.3.5 Panel power-on: Remove the rubber of panel, make sure it is power on. Then put the rubber back to the panel.

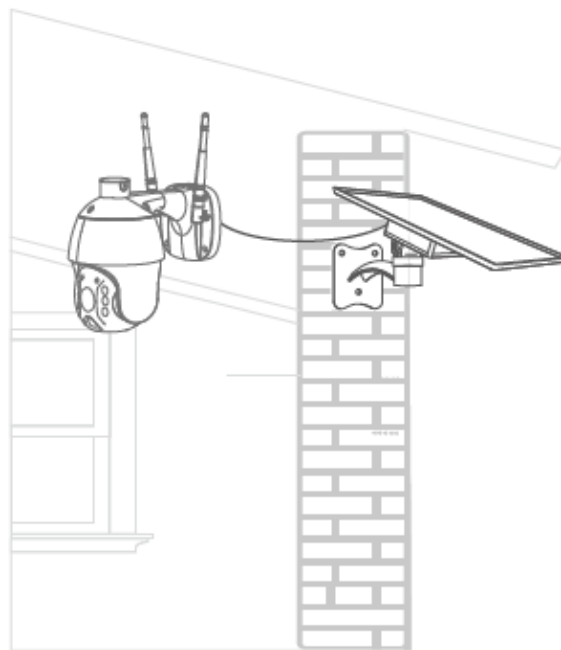


2. INSTALLATION

2.1 Integrated Installation



2.2 Separated Installation



Accessories needed
(not standard configuration)



1*Bracket



1*Extra power
cable 2M

3. APP Installation

3.1 Scan the following QR codes or search for “UBOX” from the App Store (for iOS devices) or Google Play Store (for Android Smartphone) to download and install the app.



IOS



Android



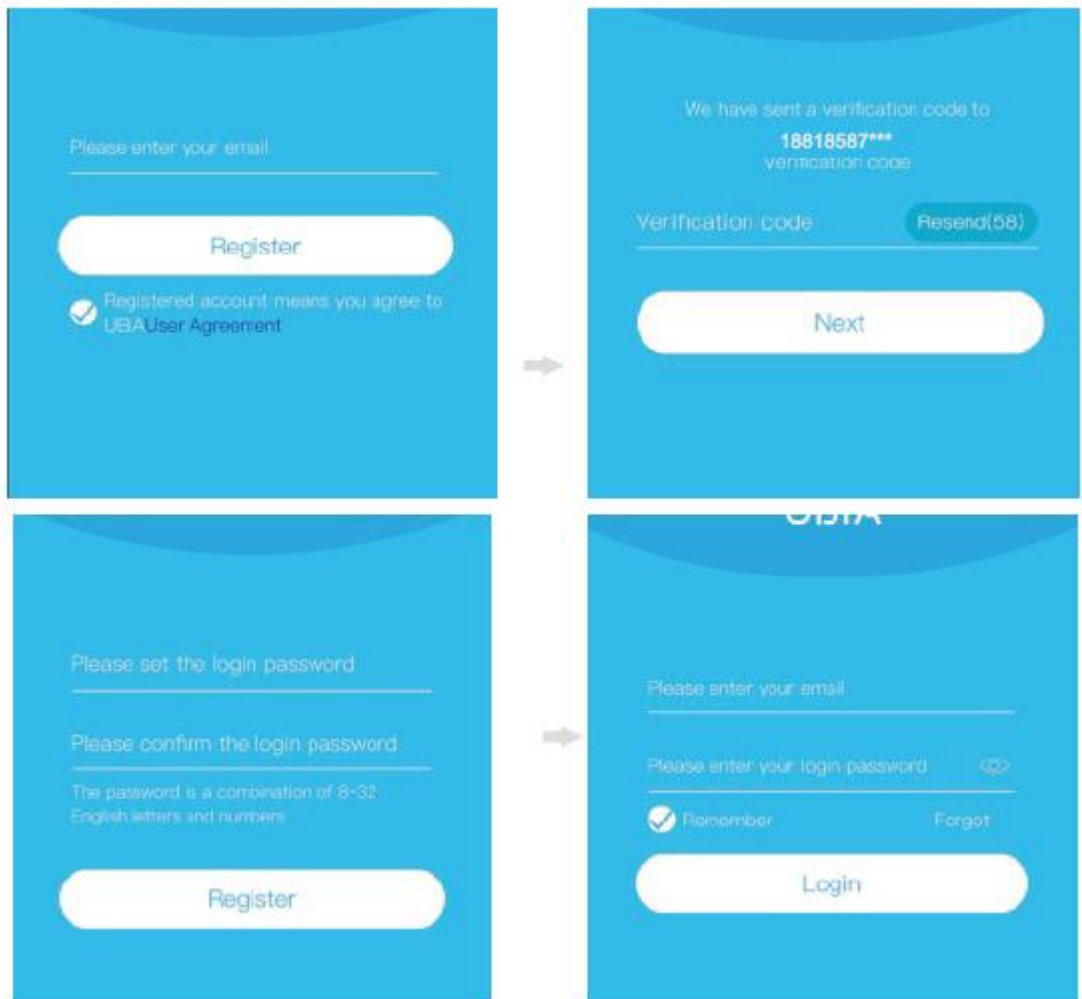
3.2 APP Registration

3.2.1 Open the app then input your E-mail address then press “Register. Check and select to agree the agreement then your Email box will get a verification code. (For better user’s experience, please allow to open all permissions to avoid missing any notification from the app)

3.2.2 Input the “Verification Code” and press “Next” (“If it’s not in your inbox, please check your spam folder”)

3.2.3 Set the login password and confirm the login password. Then press “Register” to next step (For your password safety, the password requires more than 8 characters plus a combination of letters)

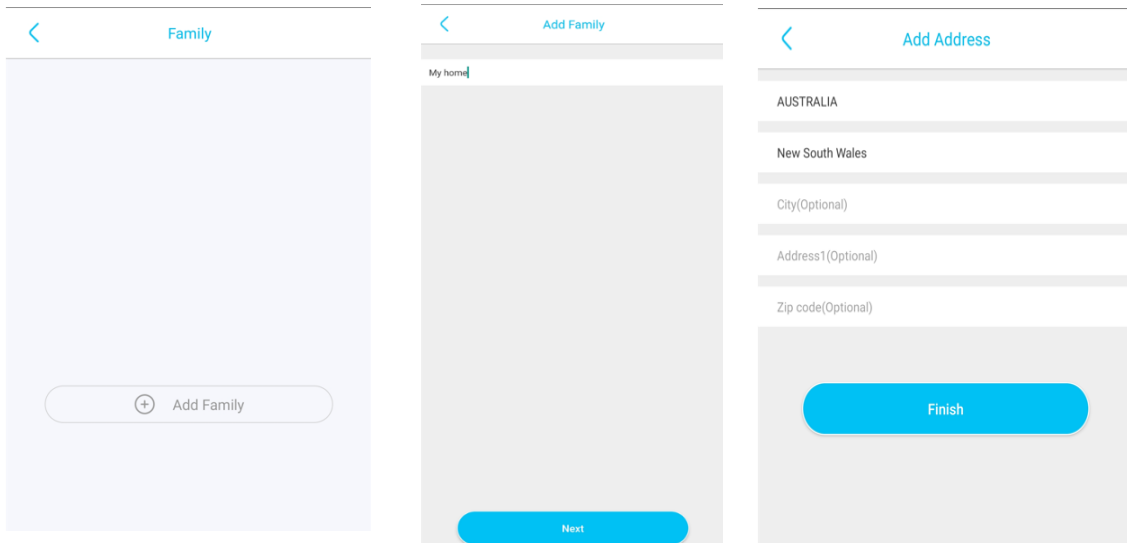
3.2.4 Enter your e-mail address, and input your login password. Then press “Login”





4. WIFI Connection

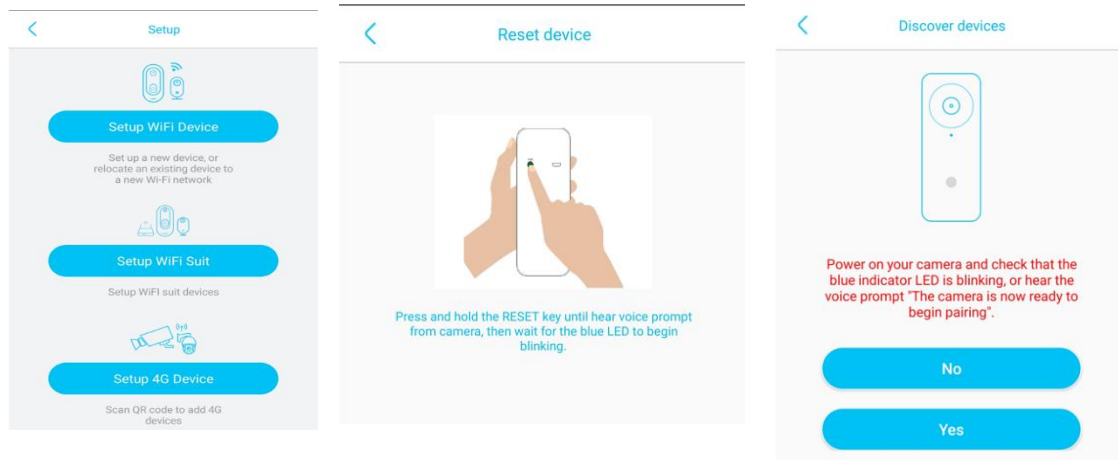
- 4.1 Press “Add Family” then set the room or position as per reminders.
- 4.2 Enter your family name and then press “Next”
- 4.3 Input the necessary information just like Country, Province, then press “Done”.
- 4.4 Press “Add a device” to add a smart device.



- 4.5 Connect the device with power supply and make sure your mobile phone is connected to an available Wi-Fi. Then press “Setup Device”
- 4.6 After powering on the device, wait for the blue LED and voice prompt. The device is waiting for pairing, which means your device is in pairing mode.
- 4.7 If you did not hear the voice prompt, please press the reset button until the blue indicator lights up and then release. This device will reboot and enter the pairing state.
- 4.8 The app will input the Wi-Fi name automatically, please input the correct Wi-Fi Password. Then you can choose the “QR code configuration” or “Sound wave configuration”



4.9 Sound wave configuration: Make sure camera and mobile phone within 1M distance, you will hear the wave sound DI DI, follow the tips showed in the mobile to finish configuration



4.10 QR code configuration: Select the QR code configuration then the mobile phone displays a QR code. Use the device to scan the QR code 10cm away from the mobile phone.

4.11 Select the family name or device location then press “Done”

4.12 The device will enter to the device list automatically. Setup success! The device is ready to use.

5. Device Setting

Enter to select your family or smart device location
 Turn on/off the push notification.
 Settings: Sharing, Cloud storage, Delete the device..
 Press to enter the preview section.
 Press to add a smart device

Smart device basic settings
 Could set "Storage management, Flip screen, Environmental model, PIR detection, Sleep time, Power frequency, LED indicator, Device name"
 Could check the information of "Device name, Device ID, Model, FW version, Manufacturer, Check for the FW updates.."

Start Cloud service
 Pan tilt control

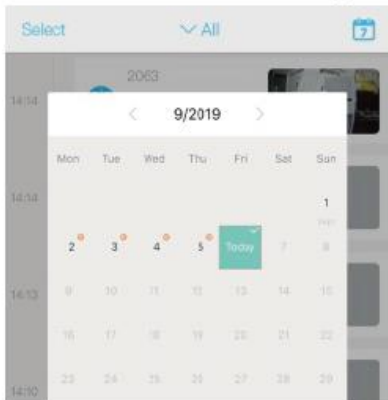


☎ 18818587****

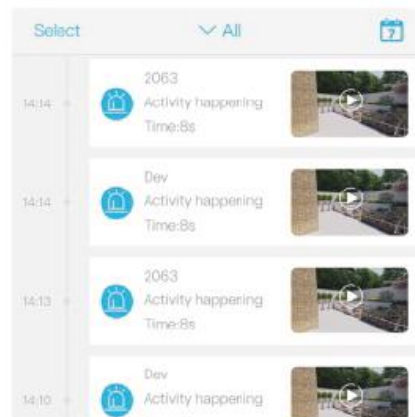
Check "my account" name and change password;

- ☁ Cloud Service → Check and purchase the Cloud storage;
- 👤 Face recognition → Check and purchase the AI Cloud Facial Recognition;
- 👥 My Friends → Check and add my friends list and permission;
- ⚙ Common Settings → Set the default voice and resolution for the devices;
- ① About → Press to add a smart device

Click the "Calendar" icon on the right top corner, then choose the date to playback the vicoes from cloud storage.



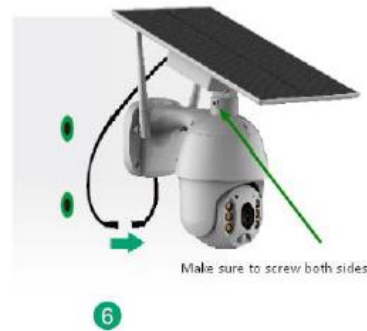
Choose the desired date to check all videos from the cloud.





How to Install the Solar Powered Camera

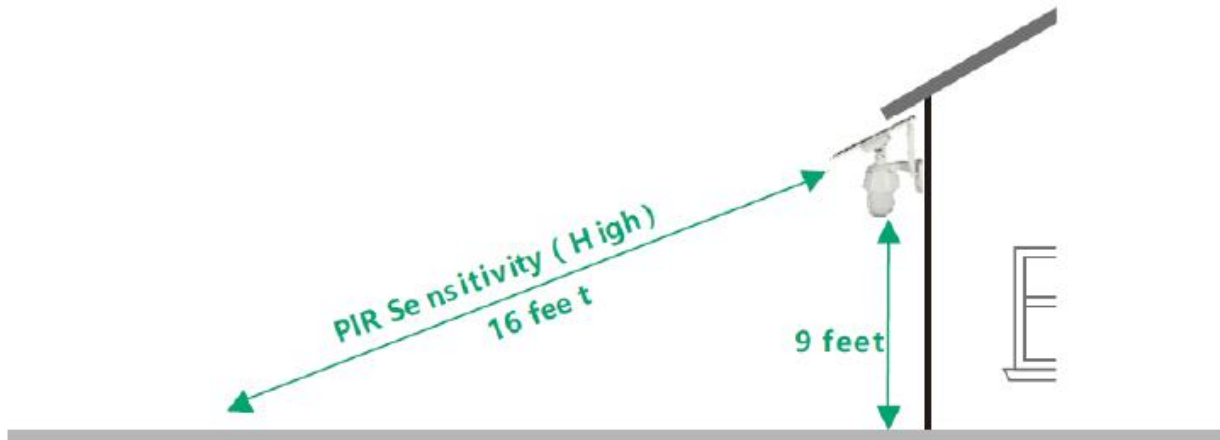
Stick the position paper on the wall where you want to install the camera. Drill the 4 holes according to the 4 dots on the paper and then fix the bracket using the expansion screws.





Recommended height to install the camera

We suggest installing the camera about 9ft. You may adjust the camera angle physically according to the live view in your mobile. To focus your motion area to get the more accurate motion trigger events





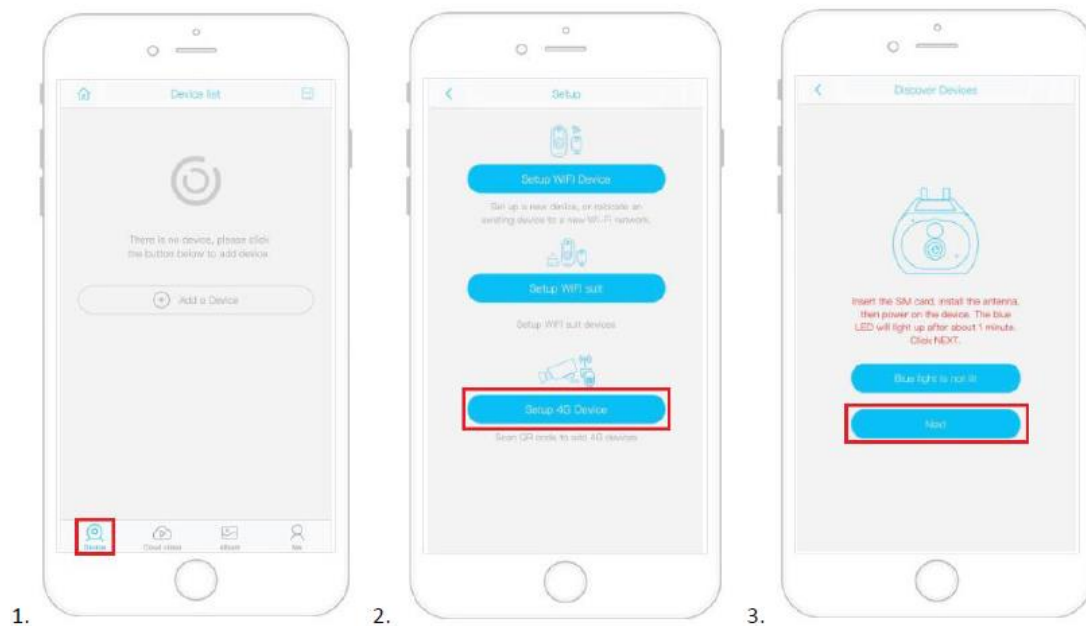
Quick guide in adding Elinz IPCAMPTZSOLAR4G to Ubox App (IPCAMPTZ 4G Version)

- Make sure to test your Sim card if it's working on your mobile phone and has data credit before inserting it in the camera.
- If you have only just activated your Sim card it may take up to 24 hours to work depending on your carrier.
- Make sure there is a signal/reception in the area where the camera is located.
- Insert Sim card correctly.

Steps

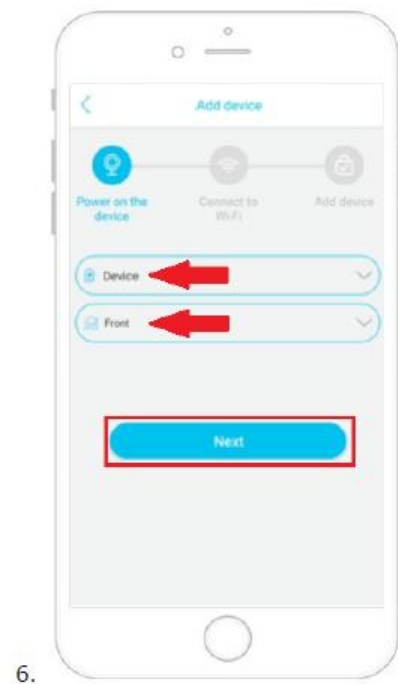
1. Go to Device tab from the bottom left-hand corner.
2. Click "Setup 4G Device".
3. Wait for the blue light then click "Next".

Note: If you do not have a blue light showing on the camera and the light is red **do not** hit next, the camera will not set up correctly. So, you must wait for the blue light to turn on. In some cases, it can take up to 90 seconds.



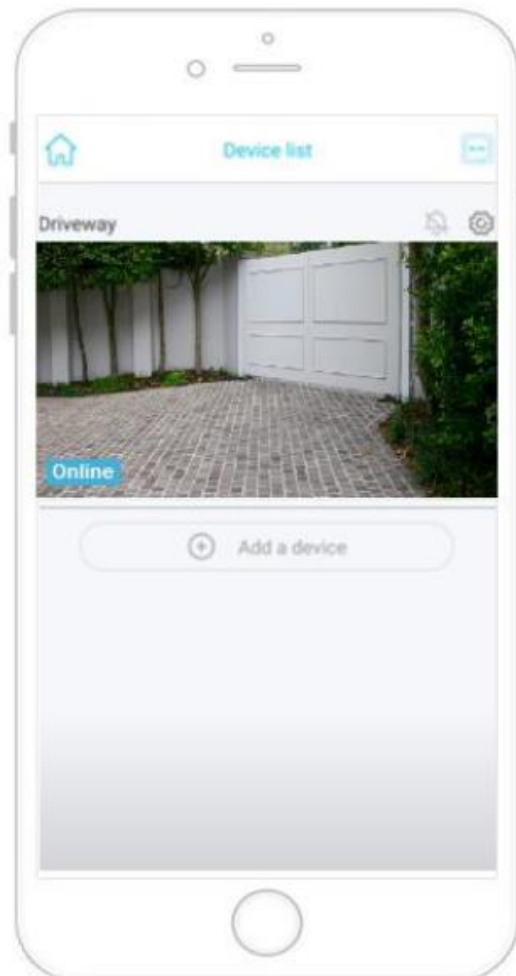
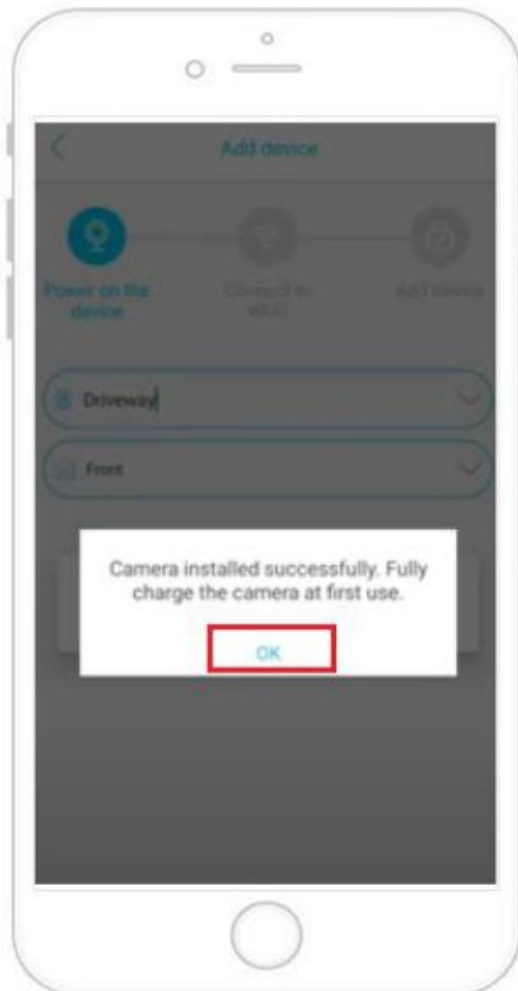


4. Scan the QR Code on the camera.
5. Wait for few seconds to connect.
6. Name the device, then click "Next"





6. You will get a prompt that camera has been installed successfully





7. Special Notes

- a. The device is equipped with a rechargeable lithium battery. The battery life will be affected by the device wake-up time and the number of wake-ups. Therefore, the PIR sensor alarm detection function is used in an environment with a lot of people. It is recommended to turn off or set the device to low sensitivity to reduce device wake-up and call times to extend battery life. When the battery is low, please charge the battery immediately.
- b. Keep the device in range of your router. Make sure the device is placed close to the Wi-Fi router. If there has to be thick or insulated objects between the device and the Wi-Fi router, which may lead to weak Wi-Fi signal, please make sure the Wi-Fi signal is in good level before you start using the device.
- c. It is a delicate device with low power consumption design. Every time the device is awakened and will work for a few seconds. After that, the device will enter standby mode to save power. You can set the work time in the app settings.
- d. Because the mainland China does not receive Google's push messages, you need to open the app's self-starting function in your phone to receive push messages.
- e. This device provides one month of free cloud storage services. If you need to continue using value-added services after the trial period expires, you need to purchase them in the app.