

# USER MANUAL

## 720P HD 5" Digital Wireless Backup Camera Kit



Thank you for purchasing our product, please read this user manual first before operating it, welcome to contact with us if you need any assistances.

## Feature:

1. 2.4G Digital wireless technology, no interference and easy installation.
2. High brightness lcd display with built-in wireless receiver.
3. Wireless transmitter can work with any analog backup camera or cctv surveillance camera.
4. 120 ms time delay only, quick response time like wired backup camera system.
5. Working Frequency: 2400~ 2483MHz.
6. Image up/down/,normal/mirror flip function.
7. 2CH split display mode,support 2wireless camera working at the same time.
8. Monitor working voltage:DC12V-30V, camera working voltage: DC12V-30V

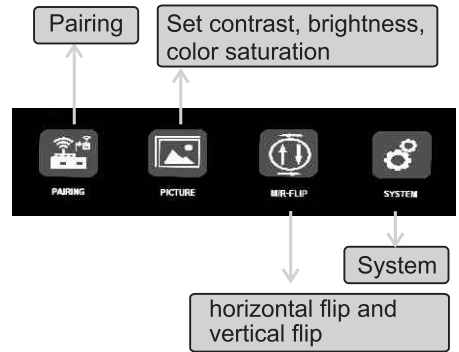
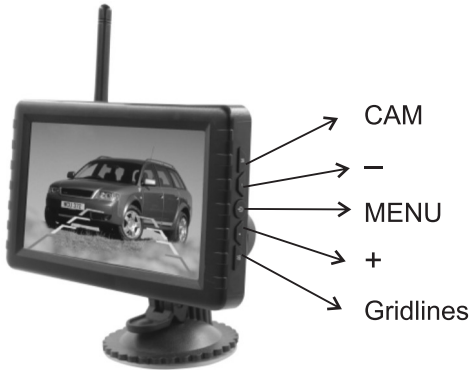
## Monitor Specifications:

Screen Size: 5 inch  
Display Screen: IPS panel  
Resolution: 800\*(RGB)\*480  
Brightness: 400cd/m2  
Contrast: 400:1  
Consumption: 2W  
Power Supply: DC12V-30V  
Operation Frequency:2400 ~ 2483MHz  
Line of Sight Range:>150m

## Camera Specification:

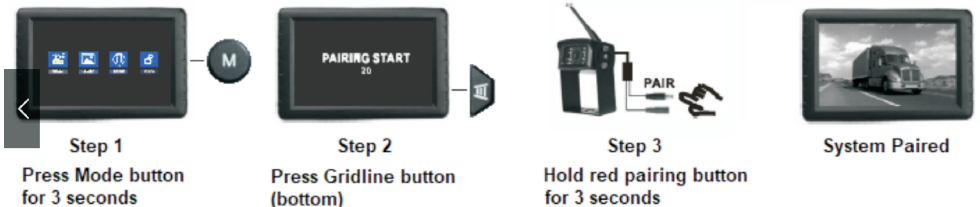
1. Image Sensor: HD 1/3 Color CMOS
2. Horizontal Resolution: 800 TVL
3. Pixels:960\*576
4. View Angle:120°
5. Working Voltage:DC12V-30V
6. Waterproof Rate:IP68
7. Operation Frequency:2400 ~ 2483MHz
8. Line of Sight Range:>150m

## Brief Introduction:

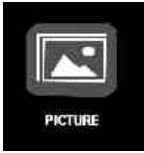


## PAIR

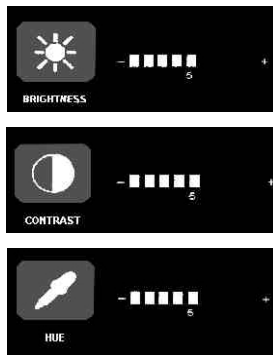
(The camera and monitor were paired already, you just need to power them.)



## PICTURE



Sub-menu



(1) BRIGHTNESS setting

Select the Brightness icon, press “/Δ” key to enter settings, press “-” or “+” keys to select the required Brightness setting.

(2) CONTRAST setting

Select the Contrast icon, press “/Δ” key to enter settings, press “-” or “+” keys to select the required Contrast setting.

(3) HUE setting

Select the Hue icon, press “/Δ” key to enter settings, press “-” or “+” keys to select the required Color setting.

Press the “M” button to enter menu, Press “-” or “+” scroll to “PICTURE”, press “/Δ” button.

## MIR-FLIP

MIR-FLIP: Press the “REC” key to enter NORMAL/MIRROR/FLIP/MIR-FLIP.



## SYSTEM

Press “-” or “+” to select SYSTEM, press “/Δ” to enter



## SPLIT MODE



## PARKING LINES



Press button “Δ” to turn on/off the parking lines.

## INSTALLATION:

1. Drill 2 holes at the rear of your RV to fix the camera.
2. Screw the camera antenna.
3. Connecting the camera's power wire to the reversing light's power wire.
4. Clean the windshield, mount the suction cup to fix the monitor at proper place.
5. Plug the cigarette lighter into the car cigarette lighter's socket to power on the display.



Plug in the cigarette lighter.

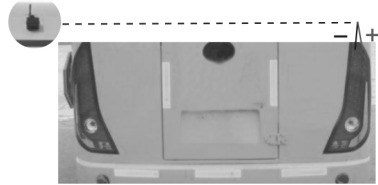


Installation completed

## Wiring for backup camera and side camera

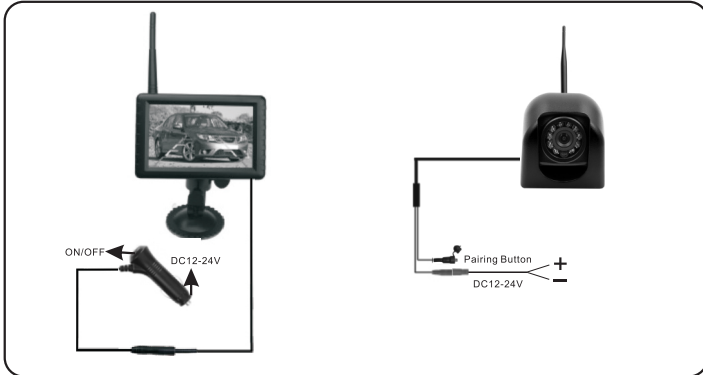


Drill 2 hole to mount the camera



Connecting the backup camera's power wire with the reversing light's positive and negative end.

### Wiring diagram



### Installation Diagram

