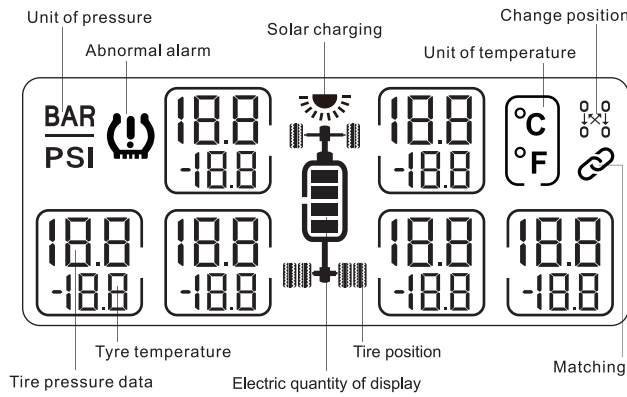


# User Manual

## Wireless Tyre pressure monitoring system

### I.Quick explanation



18.8	Tyre pressure		Electric quantity of display
-18.8	Tyre temperature	°C °F	Unit of temperature
	Abnormal alarm	BAR PSI	Unit of pressure
	Matching		Solar charging
	Change position		Confirm key
	The key for selection and Brightness adjustment		ON/OFF
	Set key		

**Caution:** Turn on the power of the display and then install the sensor. Follow this step, and the data can be displayed at real time.

### II.Product features

- The monitor keeps sleeping mode after parking for three minutes and receive the data in real time until shocked again
- Large display
- High efficiency solar charging
- Monitor:Automatically wake-up
- Two grades backlight brightness
- 7 kinds of alarming modes:high / low pressure /high temperature/Sensor failure/Monitor low power/Sensor low power /Rapid air leak alarm
- Pressure units (PSI,BAR) and temperature units (° F/° C)
- Long receiving distance
- Monitor up to 6 tyres
- Two axes high and low pressure values setting

#### Package contents:

Monitor (1)	Signal booster(optional)	USB charging cable (1)
Mat(1)	Sensors (6)	Battery wrench(1)
Anti theft ring (7)	Instructions (1)	

### III.Functional description of the display

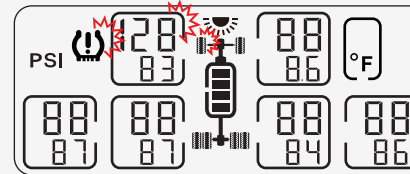
After the display alarms, press anywhere on the display to remove the prompt sound, and the flickering prompt will continue till the fault is removed

Factory default settings  
 High pressure alarm value:116PSI  
 Low pressure alarm value:58PSI  
 High temperature alarm value:149°F

**How to restore the factory default?**  
 Turn the monitor off, then turn it on and holding press the SET button until hearing the sound of "D...".The standby interface will be displayed, indicating that the factory reset successfully.

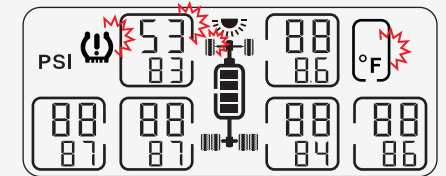
#### High-pressure alarm

Tyre pressure is over 116PSI



#### Low-pressure alarm

Tyre pressure is lower than 58PSI

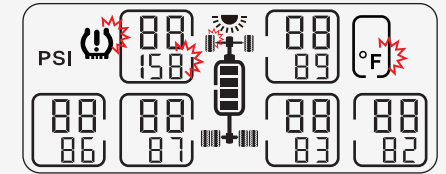


Note:

- The symbol means flickering and will not appear on display actually.
- It's common with + / - 2psi deviation, which will not affect your judgment whether tires are in good condition or not

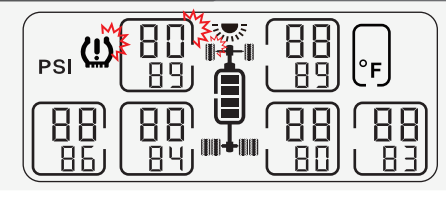
#### Tyre-temperature alarm

Tyre temperature is over 149°F



#### Air-leaking alarm

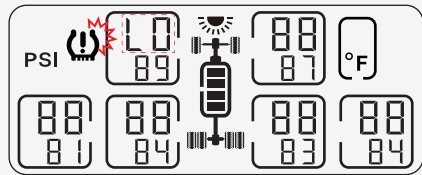
Slow leakBi-Bi-Bi-Bi-  
Fast leakingBi-Bi-Bi-Bi-



### III.Functional description of the display

#### Sensor Low-power alarm

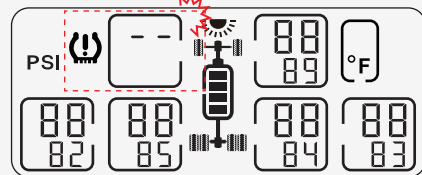
Low-power prompt of sensor



Note: when the sensor gives a low-power alarm, the low-power icon and the pressure value are displayed alternately, Lo is displayed for 10 seconds, and the pressure value is displayed for 30 seconds. Cycle alternately until the exception is removed.

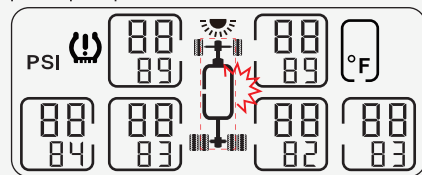
#### Sensor failure

Sensor failure prompt,for example:No.1 Sensor failure,alarming as below



#### Monitor low battery alarm

Low-power prompt of Monitor



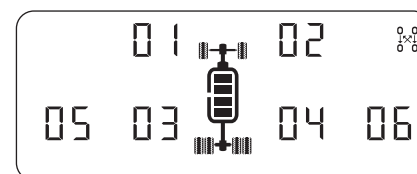
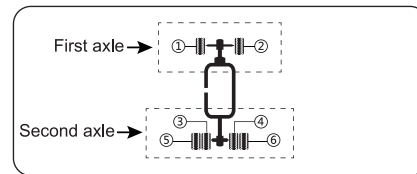
Please use USB cable to charge for the monitor by vehicle power supply. Adviod charging at a long gtime parking.

### IV.Parameter setting

Pressure Unit	BAR/PSI
High Pressure	8.0BAR(116PSI)
Low Pressure	4.0BAR(58PSI)
Temperature Unit	°C/°F
Temperature alarm value	65°C/149°F

#### Detail of display

The tires in monitor interface are divided into two axes as follows:  
 The tire numbers(01,02,03,04,05,06) represent the tire position where the sensor is located.



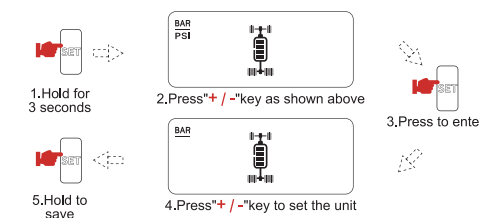
Tyre Locations

NO.5,6 Sensors can be used on tires of your trailer

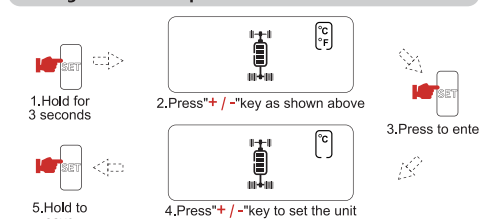
(The parameters have been set before delivery, and the operations below are not needed)

#### Setting of unit of pressure

Caution:①Maximum pressure can be set to199PSI (13.7 BAR)  
②Maximum alarm value can be set to199 PSI (13.7 BAR)

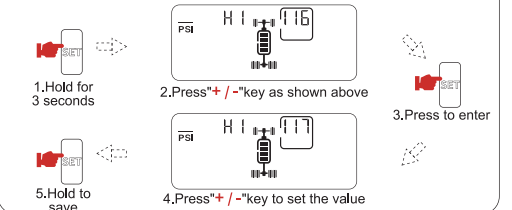


#### Setting of unit of temperature



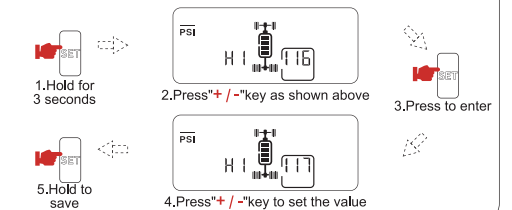
#### Setting of upper alarm value of First axle tire pressure

Caution:Maximum alarm value can be set to199 PSI (13.7 BAR)

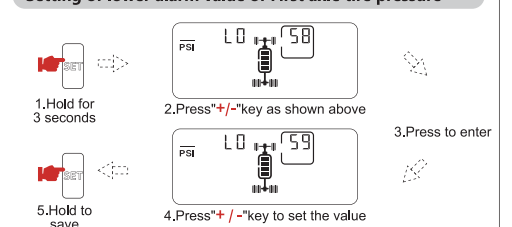


#### Setting of upper alarm value of Second axle tire pressure

Caution:Maximum pressure can be set to199PSI (13.7 BAR)

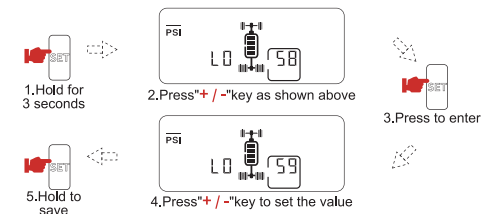


#### Setting of lower alarm value of First axle tire pressure

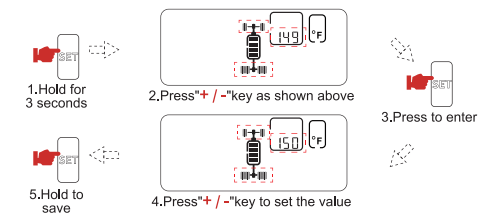


## IV. Parameter setting

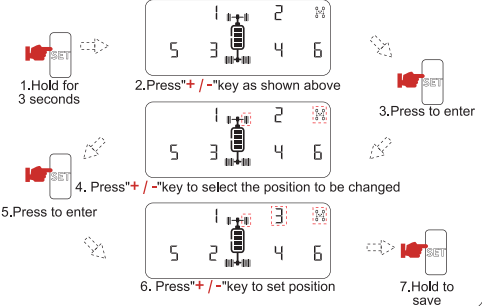
### Setting of lower alarm value of Second axle tire pressure



### Setting of upper alarm value of tire temperature



### Interchange tire setting



## VII. Trouble-shooting

### 1 The display cannot be displayed normally

- A Confirm if the display is short of power or not (charge directly if so)
- B Confirm if the display cannot display tire pressure value (1. The sensor is short of power, 2. The signal is interfered, then match again)
- C Confirm if the display is short of codes (low-temperature cooling)
- D If the display is halted and displays in full screen (contact and return to the manufacturer or stay for 24 hours till it is recovered automatically)
- E If the above methods cannot solve this problem yet, contact the local distributor.

### 2 The sensor cannot work normally

- A Confirm if the sensor is short of power (replace the battery in time)  
In case of an outer sensor, replace with a CR1225 button cell in time  
In case of a common outer sensor, replace with a CR1632 button cell in time  
In case of an inner sensor, contact the distributor and return it to the manufacturer.
- B Confirm if the sensor is damaged due to external force (purchase another one and replace it)
- C Confirm that the normal work of the sensor and the vehicle is not affected in driving after the sensor is installed  
**(potential risk! Too close distance between the air nozzle and the clip may result in the damage)**
- D The sensor cannot be installed normally in case of a special vehicle during installation (contact the technical personnel of the manufacturer and seek for the solution).
- E If the problem cannot be solved with the above methods, contact the local distributor.

### 3 When the icon of "short of power" appears on the display screen, and it continues being used, the display may be malfunctioned. At this time, charge the display to return it to normal.

### 4 The colors of the display screen are changed

Confirm if the temperature inside the vehicle is too high (over 65°C). When the temperature returns to normal, it will be recovered to normal display.

### 5 Update speed of the display screen becomes slower

Confirm if the temperature inside the vehicle is too low (below -20°C). When the temperature returns to normal, it will be recovered to normal display.

### 6 After the display is started again, there's no data display of tires

Only when the sensor detects that the tire has a pressure change of over 1PSI, it will send new pressure and temperature value to the display, so there's no data display of the tire. The data will be displayed only after the vehicle is started.

### 7 Two years warranty

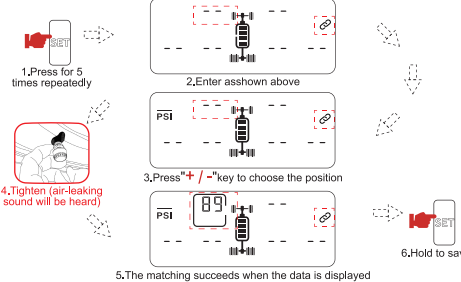
### matters needing attention

- Please use the product in accordance with the operating instructions. The factory will not bear any responsibility for the consequences caused by misuse beyond the operating instructions.
- Please install the product in accordance with the operating instructions. The factory is not responsible for any consequences caused by incorrect installation in accordance with the operating instructions.
- Please set the alarm threshold according to the specifications and parameters provided by the tire manufacturer and its dealers. TPMS factory is not responsible for the consequences caused by any error in setting the alarm threshold.
- TPMS installation must be handled by technicians. During use, care should be taken to maintain the sensors in the tires and remove / load the tires.
- This instruction manual is subject to change without notice if necessary.

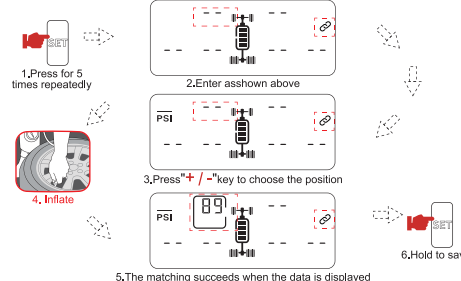
## V. Matching operations

Note: The operations have been matched before delivery, and they are only needed when the data is missing, or when the sensor or the display needs to be replaced.

### Matching of outer sensor



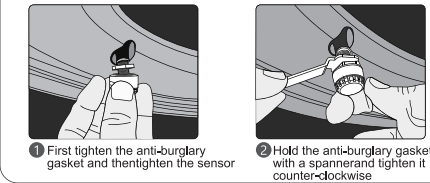
### Matching of outer sensor



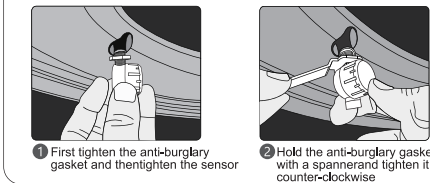
Note: Don't need matching until it lose the link due to interference or replacement

## VI. Installation of sensor

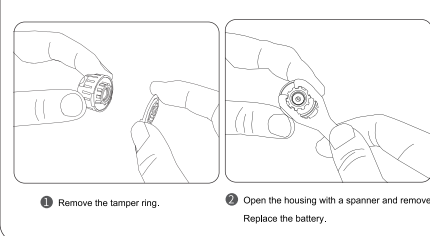
### Installation of outer sensor



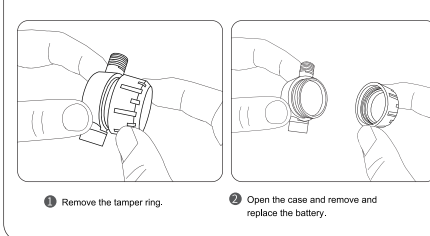
### Installation of outer sensor



### Replace sensor battery



### Replace sensor battery



## VIII. Parameters of sensor

Specification of sensor/emitter
Working humidity: 100%
Weight: Inner sensor: 55g (NF+) (37g of air nozzle not included) Outer sensor: 9.5g (WF)/6g (WI)
Dimension of inner sensor: 69mm*86mm*14.5mm (NF+) (L*W*H)
Dimension of outer sensor: 23mm*15mm (WF) (DIA*H) 18mm*13mm (WI) (DIA*H)
Standby current: 1uA
Standard: CTB160109001Q test report is issued by the test agency with legal qualifications
Test scope of pressure: 0 ~ 13.7bar (0 ~ 199 psi)
Test scope of temperature: -40°C~+125°C
Transmitting frequency: FSK433.92MHz

### Notes for attention and statement

- This product applies only to the models of cars with air pressure of tire within 199PSI.
- The safety of Car tires cannot be wholly dependent on this product. The tires shall be checked on a regular basis, and the tires shall be ensured to be free from damages such as pricked hole, cutting and swelling.
- When the product gives out an alarm, the driver shall stop the car for checking and handling.
- The product cannot forecast any sudden damage of the tires as a result of external force.
- Do not operate the product in driving.
- The shelf life of the battery of the sensor is related to the driving mileage of the Car.
- Do not charge the monitor for a long time (to avoid shortening the battery life of the monitor).
- Please don't use the liquid tire repair agent, or it may block the sensor detection hole.

## IX. Notes for use

Please read the following carefully before installing the product:

1. The display shall be installed at the place where driving view is not blocked.
2. The display shall be ensured to be reinforced so that it will not fall off in the course of driving.
3. After the sensor is installed, confirm if the air nozzle is air leaking, and apply some soap water at the air nozzle when necessary and check if any air leaking exists.
4. When the air pressure is too high, take care and prevent the tire from bursting in driving, and when the air pressure is too low, take care of oil consumption and balance.
5. The product can monitor the tires at real time effectively, but it cannot guarantee any sudden occurrence of safety accident of tires. Therefore, choosing tires of good quality is of equal importance with ensuring normal air pressure of tires.
6. When the vehicle is in driving, if the signal is interfered, the signal of the display may be missing, and the use of the product may be affected. In this case, it shall be matched again.
7. If the display is not touched or vibrated within 3-5 minutes, it will hibernate automatically, and a slight vibration may trigger automatic power-on test of the data transmitted by the sensor.
8. The connection between the display and the sensor is wireless. Several anti-interference functions have been designed and the possibility of its being interfered is extremely low.
9. In the course of driving, due to thermal expansion and contraction, air pressure of tires may be changed towards slightly low or slightly high, and it's normal.
10. Generally, natural air leaking of the tires may occur due to natural ageing of rubber product, and it's normal and has not direct relationship with installation of the product.
11. It's prohibited to dismantle, modify or change the product by yourself, and it's the responsibility of your own in case of your doing so which results in failure of normal work of the product.
12. The original air nozzle of the vehicle being rubber one, it's recommended be changed into an aluminum alloy one (for when the sensor is mounted onto the rubber air nozzle, the air nozzle may fly out due to the impact of centrifugal force at high-speed rotation).
13. The specification and technical parameters may be inconsistent with those in the user manual, for they may be changed from time to time due to upgrade or update. They are subject to the actual product without prior notice, and the manufacturer reserves the right to interpret them.